

LATERAL MOVE SYSTEM

SELECTION GUIDE



Why a Zimmatic Lateral Move System?

- **Land prices are high — you need to maximize production.**

A Zimmatic Lateral Move can irrigate fields up to 320 acres with 98% coverage. It can put more of your field to work, virtually eliminating idle land.

- **It takes a good yield just to recover your seed and chemical costs.**

A Zimmatic Lateral Move lets you combine maximum irrigation coverage with a uniform watering pattern over your entire field. This combination helps ensure a better yield out of every acre for a higher return on your investment in production inputs.

- **You want the kind of control that will increase crop quality and add value at harvest.**

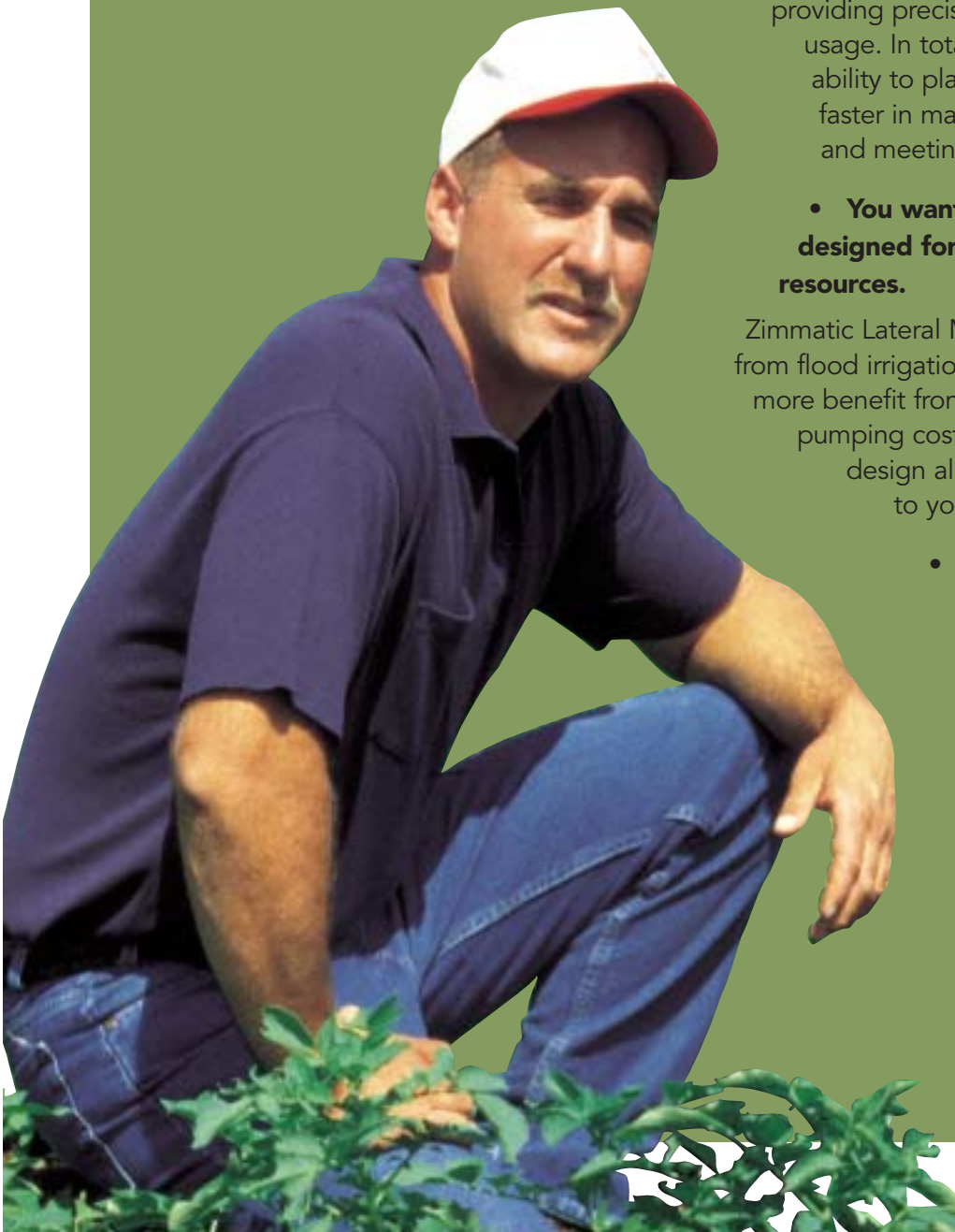
Zimmatic Lateral Moves are a top choice of irrigators growing high-value crops – particularly contract growers. In addition to more coverage and uniformity, they're a management tool for providing precise control of water and chemical usage. In total, they can help increase your ability to plan more precisely and react faster in maintaining crop quality standards and meeting yield goals.

- **You want a system that can be designed for your operation and conserve resources.**

Zimmatic Lateral Moves are ideal for conversion from flood irrigation. They are a proven way to get more benefit from less water and to reduce pumping costs. In addition, their modular design allows them to be factory-tailored to your field and application.

- **You want a system that requires less labor and time to manage.**

GrowSmart™ controls make scheduling lateral move system operation faster and easier than even before. Our Voice Command system provides remote monitoring and control of system to minimize time and labor costs.



Lateral Move Systems to Match Your Operation



HOSE-FED

- Supplied with water through a large-diameter hose attached to a pressurized mainline
- Pivot and/or towing options for use on adjacent fields for increased coverage area (see diagrams on back)
- Uses 2-wheel or 4-wheel cart (depending on field size) with four-, six-, and eight-inch hose (10.2, 15.3, 20.3 cm)



ENCLOSED PIPELINE

- Maximum coverage in long, wide fields where hose or ditch water supply would be impractical
- Water supplied through risers spaced at intervals along a buried, pressurized pipeline
- Forward and rear intake units alternately couple and uncouple to pipeline risers as system moves across the field



DITCH-FED

- Can use existing ditch at field edge or one in the center
- Ditches can be unlined or lined with concrete or plastic and can accommodate grades up to one percent
- Depending on ditch type, water is supplied through a floating intake or a floating self-cleaning filter screen
- For concrete ditch, a traveling weir assembly is available

SYSTEM TYPE	HOSE-FED	DITCH-FED	ENCLOSED PIPELINE
Field Size	Up to 160 acres (65 ha)	160 to 320 acres (65 to 130 ha)	160 to 320 acres (65 to 130 ha)
Power Source	On-board diesel generator or electrical cable	On-board diesel generator and pump or electric cable	On-board diesel generator
Guidance System	Furrow, buried cable or above-ground cable	Aboveground cable or buried cable	Aboveground cable
Grade of Field	Up to 6%	Flat	Flat
Extended Coverage Option	Yes	No	No

Zimmatic Lateral Move Systems

We'll Custom Build A System Just For You.

GROWSMART CONTROL SYSTEMS

GrowSmart™ gives you multiple options for managing your irrigation system. Choices include:

- FieldBASIC control panel — Easy-to-use, reliable manual control
- FieldBOSS control panel — User-friendly, computerized control for time-based irrigation scheduling or manual operation
- Voice Command — Remote control and monitoring via cellular phone, or business band radio



CART AND POWER OPTIONS

Depending on system size, Zimmatic lateral move systems can be equipped with a 2-wheel or 4-wheel cart which can be powered by:

- An on-board diesel engine and generator set (Plus an on-board pump for the ditch-fed system)
- Commercial power via a heavy-duty mining-type cable connected to outlet boxes along the line of travel
- Fertigation and chemigation equipment can be customized to your requirements by your Zimmatic Dealer

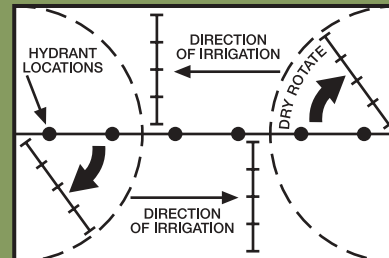
ACCURATE GUIDANCE SYSTEMS

Three guidance systems are available to match the needs of your field. (see chart on previous page) They include:

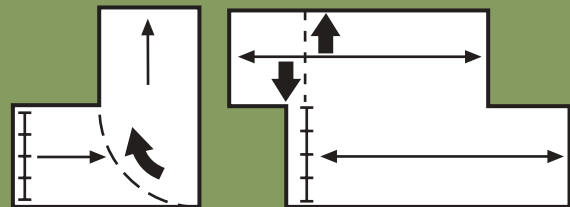
- Furrow
- Aboveground cable
- Buried cable

OPTIONS FOR EXTENDED COVERAGE

The diagrams below illustrate how equipping your Zimmatic hose-fed lateral move with a pivot and/or reverse tow package can lower your cost per irrigated acre.



Pivot and reverse for double coverage. In this situation, the lateral move cart is secured to a turntable when it reaches the end of the field. Then allows it to be pivoted and reversed to cover the other side of the field.



“L-shaped” and offset fields can be easily handled by combining the pivot and reverse tow options.

PRECISION APPLICATION

Your system will be computer designed with:

- Sprinklers — Rotators, sprays, wobblers or impacts to match desired water application rate
- Drops — To minimize water loss due to wind and evaporation
- Offsets and Boombacks — To expand application area and minimize wheel tracking

For more information, see your local dealer.

